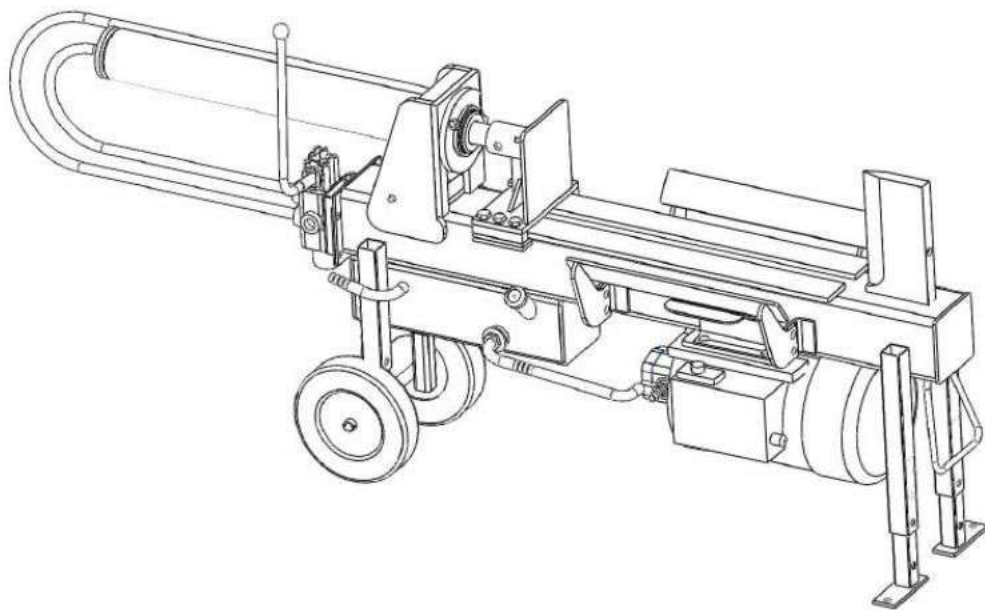


Instruction Manual for Hydraulic Log Splitter



FOR YOUR SAFETY

**Read and understand the entire manual
before operating machine**

Save This Manual for Future Reference

MODLE NUMBER:LS12T

SAFETY WARNINGS&CAUTIONS

SAFETY WARNINGS&INSTRUCTIONS

SYMBOL AFFIXED TO THE MACHINE

● UNDERSTAND YOUR LOG SPLITTER

Read and understand the owner's manual and labels affixed to the log splitter. Learn its application and limitations as well as the specific potential hazards peculiar to it.

● DRUGS, ALCOHOL AND MEDICATION

Do not operate the log splitter while under the influence of drugs, alcohol, or any medication that could affect your ability to use it properly.

● AVOID DANGEROUS CONDITIONS

Put the log splitter on a 60-75cm high, stable, flat, and level work bench where there is plenty of room for handling, and help the operator stay alert. Bolt the log splitter to the work surface if it tends to slip, walk, or slide.

Keep your work area clean and well lighted. Cluttered areas invite injuries.

Do not use the log splitter in wet or damp areas or expose it to rain.

Do not use it in areas where fumes from paint, solvents or flammable liquids pose a potential hazard.

● INSPECT YOUR LOG SPLITTER

Check your log splitter before turning it on. Keep guards in place and in working order. Form a habit of checking to see that keys and adjusting wrenches are removed from tool area before turning it on. Replace damaged, missing or failed parts before using it.

● DRESS PROPERLY

Do not wear loose clothing, gloves, neck ties or jewelry (rings, wrist watches). They can be caught in moving parts.

Protective electrically non conductive gloves and non-skid footwear are recommended when working. Wear protective hair covering to contain long hair, preventing it from getting caught in machinery.

● PROTECT YOUR EYES AND FACE

Any log splitter may throw foreign objects into the eyes. This can cause permanent eye damage. Always wear safety goggles and/or face shield. Everyday eyeglasses have only impact resistant lenses. They are not safety glasses.

Do not put the log splitter on the ground for operations. This is awkward operating position that the operator has to bring his face close to the machine, and thus risks being struck by wood chips or debris.



● **EXTENSION CORDS**

Improper use of extension cords may cause inefficient operation of the log splitter which can result in overheating. Be sure the extension cord is no longer than 10m and its section is no less than 2.5mm² to allow sufficient current flow to the motor.

Avoid use of free and inadequately insulated connections. Connections must be made with protected material suitable for outdoor use.

● **AVOID ELECTRICAL SHOCK**

Check that the electric circuit is adequately protected and that it corresponds with the power, voltage and frequency of the motor, Check that there is a ground connection, and a regulation differential switch upstream.

Ground the log splitter. Prevent body contact with grounded surfaces: pipes, radiators, ranges, and refrigerator enclosures.

Never open the pushbutton box on the motor. Should this be necessary, contact a qualified electrician.

Make sure your fingers do not touch the plug's metal prongs when plugging or unplugging the log splitter.

● **KEEP VISITORS AND CHILDREN AWAY**

The log splitter must be always operated by one person only. Other people should keep a safe distance from the work area, especially when the log splitter is under operations. Never use another people to help you with freeing jammed log.

● **INSPECT YOUR LOG**

Make sure there are no nails or foreign objects in logs to be split. The ends of the logs must be cut square. Branches must be cut of flush with the trunk..

● **DON'T OVERREACH**

Floor must not be slippery.

Keep proper footing and balance at all times.

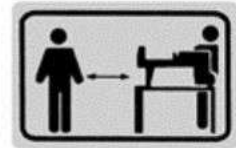
Never stand on log splitter. Serious injury could occur if the tool is tipped or if the cutting tools is unintentionally contacted. Do not store anything above or near the log splitter where anyone might stand on the tool to reach them.

● **AVOID INJURY FROM UNEXPECTED ACCIDENT**

Always pay full attention to the movement of the log pusher.

Do not attempt to load the log on until the log pusher has stopped.

Keep hands out of the way of all moving parts.



SAFETY WARNINGS&INSTRUCTIONS	SYMBOL AFFIXED TO THE MACHINE
------------------------------	-------------------------------

● **PROTECT YOUR HANDS**

Keep you hands away from splits and cracks which open in the log; They may close suddenly and crush or amputate your hands.

Do not remove jammed logs with your hands.



● **DON'T FORCE TOOL**

It will do a better and safer job at its design rate.Never try to split logs larger than those indicated in the specifications table.This could be dangerous and may damage the machine.

Don't use log splitter for a purpose for which it was not intended.

● **NEVER LEAVE TOOL RUNNING UNATTENDED**

Don't leave the tool until it has come to a complete stop.

● **DISCONNECT POWER**

Unplug when not in use,before making adjustments,changing parts, cleaning, or working on the log splitter; Consult technical manual before servicing.



● **PROTECT THE ENVIRONMENT**

Take used oil to an authorized collection point or follow the stipulations in the country where the log splitter is used.

Do not discharge into drains,soil or water.



● **MAINTAIN YOUR LOG SPLITTER WITH CARE**

Keep the log splitter clean for best and safest performance.

● **MAKE THE WORKSHOP CHILDPROOF**

Lock the shop. Disconnect master switches.Store the log splitter away from children and others not qualified to use it.

APPLICATION CONDITIONS

This log splitter is a home use model. It is designed for operating under ambient temperatures between +5°C and 40°C and for installation at altitudes no more than 1000m above M.S.L. The surrounding humidity should less than 50% at 40°C.It can be stored or transported under ambient temperatures between -25°C and 55°C.

SPECIFICATIONS

Model Number		LS12T
Motor		240V- 50Hz 2100W S6 40%
Log Capacity	Diameter*	7~30cm
	Length	52cm
Splitting Force		12T
Hydraulic Pressure		21Mpa
Hydraulic Oil Capacity		3.5L

*The diameter of the log is indicative-a small log can be difficult to split when it has knots or a particularly tough fiber. On the other hand,it may not be difficult to split logs with regular fibers even if its diameter exceeds the max.figure indicated above.

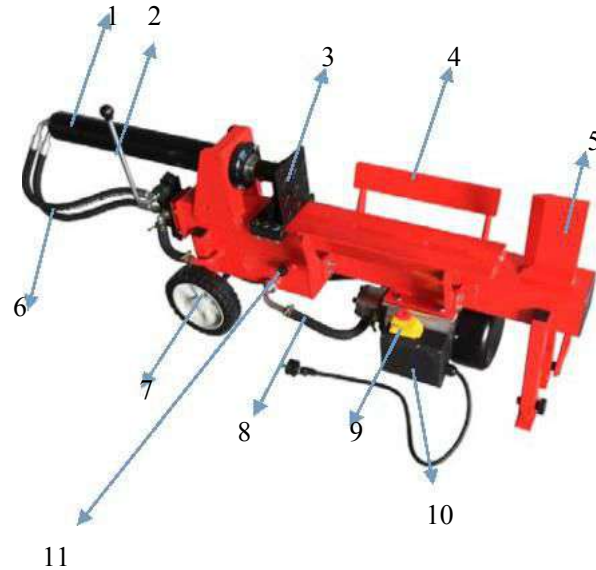
ELECTRICAL REQUIREMENTS

Connect the main leads to a standard 240V±10%(50Hz±1Hz) electrical supply which has protection devices of under-voltage,over-voltage,over-current as well as a residual current device(RCD) which maximum residual current rated at 0.03A.

CONTENS OF THE SHIPPING CONTAINER

SET UP AND PREPARATION FOR OPERATION

1. Place it on a stable, flat and level work surface.
2. Familiarize yourself with the controls and features of this log splitter in the illustrations.



- 1 cylinder
- 2.operation handle
- 3.Pushing part
- 4.Wood support frame
- 5.Work table
- 6.High pressure oil pipe
- 7.Wheel
- 8.Oil pipe
- 9.Switch
10. Motor
11. Bleed screw hole

10

Before operating the log splitter, the Bleed Screw should be loosened by some rotation until air can go in and out of the oil tank smoothly.

Air flow through the Bleed Screw hole should be detectable while the log splitter is under operations.

Before moving the log splitter, make sure the Bleed Screw is tightened to avoid oil leaking from this point.

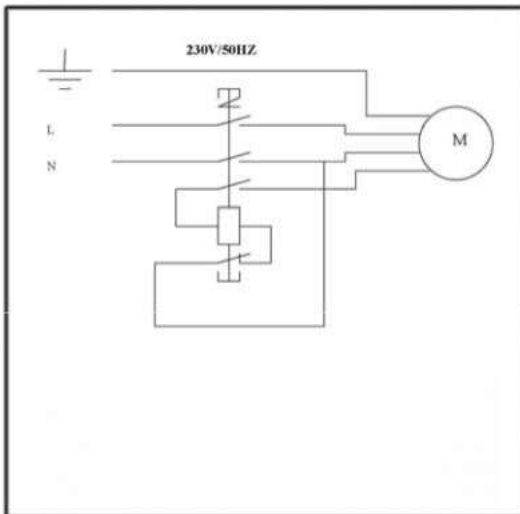


FAILED TO LOOSEN THE BLEED SCREW WILL KEEP THE SEALED AIR IN HUDRAULIC SYSTEM BEING COMPRESSED AFTER BEING DECOMPRESSED.SUCH CONTINUOUS AIR COMPRESSION AND DECOMPRESSION WILL BLOW OUT THE SEALS OF THE HYDRAULIC SYSTEM AND CAUSE PERMANENT DAMAGE TO THE LOG SPLITTER

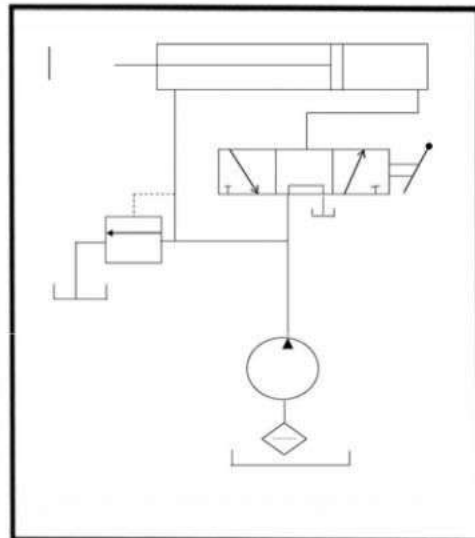
- A. Max Pressure Limiting Screw
DO NOT ADJUST THE
MAX PRESSURE
LIMITING SCREW !

Max pressure was set before the log splitter ex work and the max pressure limiting screw is sealed to ensure the log splitter works under pressure no more than 12 tons.the setting was done by qualified mechanic with professional instruments. Unauthorized resetting will cause the hydraulic pump fail to output enough splitting pressure or result serious injury as well as damage to the machine

WIRING DIAGRAM

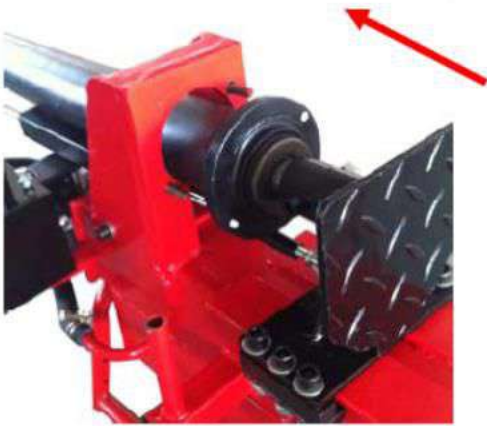


PLUMBING DIAGRAM

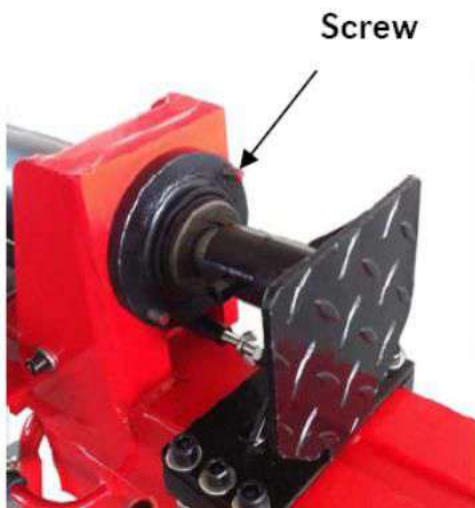


Assemble the machine

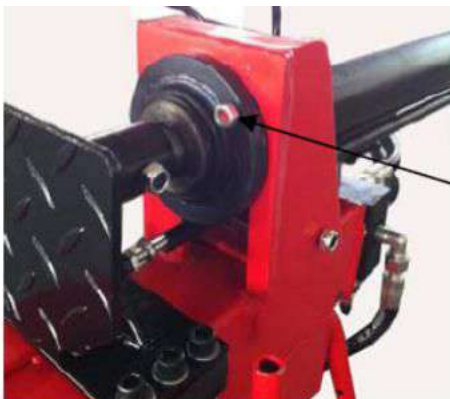
Cylinder assembly



1. Push the cylinder to the opposite direction of the splitting wedge



2. Lift the cylinder a bit. Take the cylinder bottom with two hands and rotate or move it from right to left and fit the screws to the cylinder holes.



3. Fix with two nuts.

Nut

Operation handles assembly

Firstly ,assemble the operation handle as shown and then fix the nut(M12) .



Tighten the nut before using!

4 How to use the machine

Push the handle forward for splitting mode.

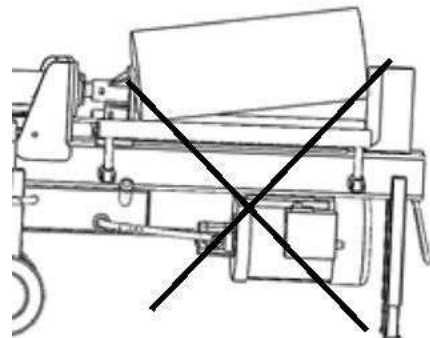
Pull the handle backward for returning mode .



Never force the log splitter for more than 5 seconds by keeping pressure on it to split excessively hard wood.

After this time interval, the oil under pressure will be overheated and the machine could be damaged. For such extremely hard log, rotate it by 90° to see whether it can be split in a different direction. In any case, if you are not able to split the log, this means that its hardness exceeds the capacity of the machine and thus that log should be discarded to protect the log splitter.

Always set logs firmly on the log retaining plates and work table. Make sure logs will not twist, rock or slip while being split. Do not force the blade by splitting the log on the upper part. This will break the blade or damage the machine.

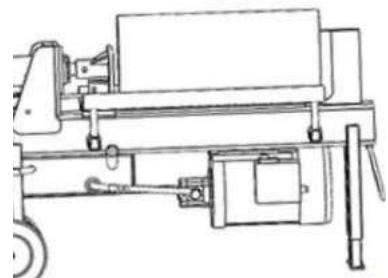


Break log in the direction of its growing grain. Do not place log across the log splitter for splitting. It may be dangerous and may seriously damage the machine.

Do not attempt to split 2 pieces of logs at the same time. One of them may fly up and hit you.

FREEING A JAMMED LOG

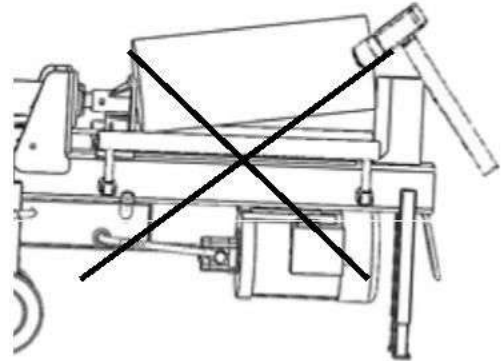
- Release both controls.
- After the log pusher moves back and completely stops at its starting position, insert a wedge wood under the jammed log.
- Start the log splitter to push the wedge wood



to go completely under the jammed one.

- Repeat above procedure with sharper slope wedge woods until the log is completely freed.

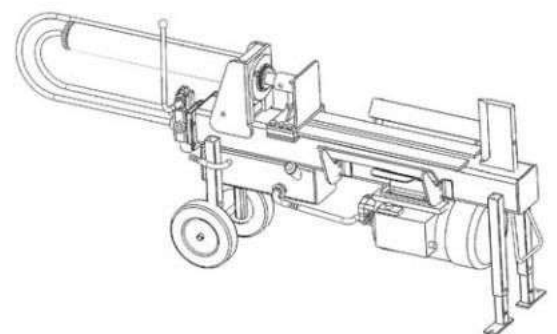
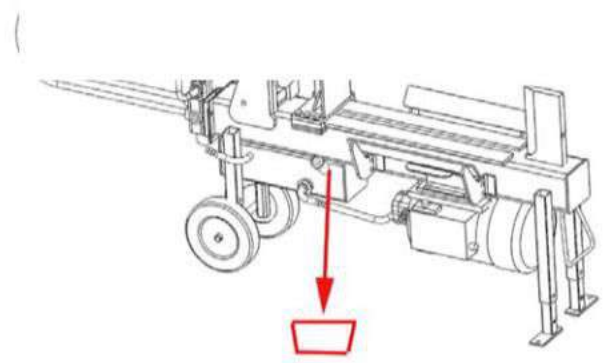
Do not try to knock the jammed log off. Knocking about will damage the machine or may launch the log and cause accident.



REPLACING HYDRAULIC OIL

Replace the Hydraulic oil in the log splitter after every 150 hours of use. Take following steps to replace it.

- Make sure all moving parts stops and the log splitter is unplugged.
- Unscrew Oil Drain Bolt with Dipstick to remove it.
- Over an 4 liters capacity container to drain the hydraulic oil off.
- Refill fresh hydraulic oil at the volume as per the hydraulic oil capacity of a particular model indicated in above specifications table.
- Clean the surface of Dipstick on the Oil Drain Bolt and put it back into the oil tank while keep the log splitter vertically.
- Make sure the level of the refilled oil is just between 2 grooves around the Dipstick.
- Clean the Oil Drain Bolt before thread them back. Make sure they are tightened to avoid leakage before placing the log splitter horizontally.



Periodically check oil level to ensure it is between 2 grooves around the Dipstick. Upon Lower oil level, oil refilling is required.

Following hydraulic oils or equivalent are recommend for the log splitter's hydraulic transmission system:

SHELL Tellus 22

MOBIL DTE 11

ARAL Vitam GF22

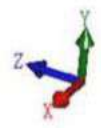
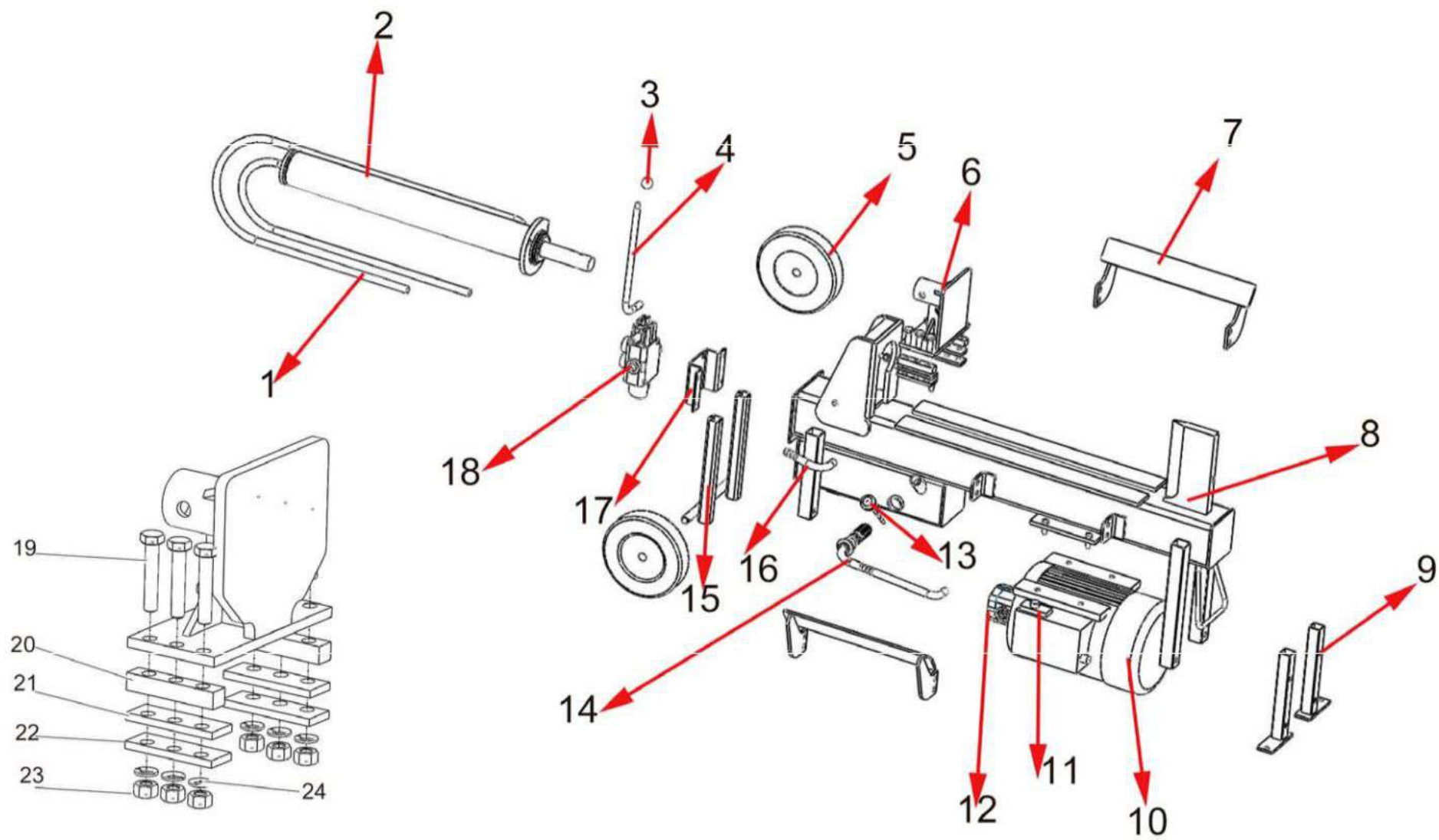
BP Energol HLP-HM 22

SHARPENING WEDGE

After using the log splitters for some time, sharpen the wedge of the log splitter using a fine-toothed File and smooth any burrs or crushed area along the cutting edge.

TROUBLE SHOOTING

PROBLEM	PROBABLE CAUSE	REMEDY SUGGESTED
Motor Stops Staring	Overload Protection Device disengaged to protect the log splitter from being damaged	Contact a qualified Electrician for opening the Pushbutton Box to engage the overload Protection Device inside
Fails to split logs	Log is improperly positioned	Refer to “Log Splitter Operation”section for perfect log loading.
	The sizes or hardness of the log exceeds the capacity of the machine	Reduce the log sizes before splitting it on the log splitter
	Wedge cutting edge is blunt	Refer to “Sharpening Wedge”section to sharpen the cutting edge.
	Oil leaks	Locate leak(s) and contact the dealer
	Unauthorized adjustment was made on Max. Pressure Limiting Screw. Lower max pressure rating was set.	Contact the dealer.
The log pusher moves jerkily, taking unfamiliar noise or vibrating a lot	Lack of hydraulic oil and excessive air in the hydraulic system.	Check oil level for possible oil refilling Contact the dealer
Oil leaks around cylinder ram or from other points	Air sealed in hydraulic system while operating	Loosen Bleed Screw by some rotations Before operating the log splitter
	Bleed Screw is not tightened Before moving the log splitter	Tighten the Bleed Screw up before moving the log splitter
	Oil Drain Bolt with Dipstick is not tight	Tighten the Oil Drain Bolt with Dipstick
	Hydraulic Control Valve Assembly and/or seal(s) worn	Contact the dealer



Pos	Description	qty
1	high pressure oil pipe	3
2	cylinder	1
3	ball	1
4	operation handle	1
5	wheel	2
6	pushing part	1
7	wood support frame	2
8	work table	1
9	support leg 1	
10	motor	1
11	switch	1
12	pump	1
13	oil level indicator	1
14	oil pipe 1	1
15	support leg 2	2
16	oil pipe 2	1
17	valve seat	1
18	valve	1
19	bolt M10X45	6
20	Guiding liner	2
21	Lower guiding	2
22	guiding support	2
23	nut M10	6
24	spring washer M8	6